

A scenic photograph of a forest stream flowing over large, moss-covered rocks. The water is clear and reflects the surrounding trees. The forest is dense with tall, thin trees, some with autumn-colored leaves. The ground is covered with fallen leaves and moss. The overall atmosphere is peaceful and natural.

# INFORMATION ON FORESTS AND FORESTRY IN THE CZECH REPUBLIC BY 2020



MINISTRY OF AGRICULTURE  
OF THE CZECH REPUBLIC







## CONTENTS

<b>1. General Macroeconomic Conditions in the Czech Republic and Forestry Position in National Economy</b>	<b>4</b>
<b>2. Forest Ownership Structure</b>	<b>5</b>
<b>3. Forest Sector Overview</b>	<b>7</b>
3.1 Forest Reproductive Material	7
3.2 Forest Nursery Practice	7
3.3 Forest Regeneration and Reforestation	8
3.4 Timber Harvest	8
3.5 Certification of Sustainable Forest Management	8
<b>4. Major Indicators in Timber Production</b>	<b>9</b>
4.1 Changes in Forest Land Area	9
4.2 Forest Categories by Their Functions	9
4.3 Species Composition of Forests	10
4.4 Growing Stock and Increments	11
<b>5. Forestry Sector Economy</b>	<b>12</b>
5.1 State Budget Funds for the Forestry Sector	12
<b>6. Timber Market</b>	<b>14</b>
6.1 Domestic Timber Market	14
6.2 Timber Export and Import	14
<b>7. Other Forest-based Activities and Sectors</b>	<b>15</b>
7.1 Game Management	15
7.2 Timber Processing Industry	15
7.3 Pulp and Paper Industry	16
<b>8. Abbreviations</b>	<b>17</b>
<b>9. Contacts to Selected Forestry Organisations in the Czech Republic</b>	<b>17</b>

# I GENERAL MACROECONOMIC CONDITIONS IN THE CZECH REPUBLIC AND FORESTRY POSITION IN NATIONAL ECONOMY

## Macroeconomic indicators of national economic development

Indicator	Unit	2019	2020
GDP in current prices	CZK billion	5 748.8	5 652.4
	year-on-year index	106.2	98.3
GDP in constant prices 2005 (adjusted for season variations)	year-on-year index	102.5	94.4
Relative GDP per capita <sup>1)</sup>	EU 28 = 100	93	-
Average monthly earnings (nominal) <sup>2)</sup>	CZK	34 111	35 611
	year-on-year index	106.4	104.4
Average inflation rate	%	2.8	3.2
Mean interest rates on bank credits <sup>3)</sup>	%	3.76	2.91
Trade balance <sup>4)</sup>	CZK billion	239.8	285.2
Current account of balance of payments	CZK billion	19.2	203.5
Balance of the state budget	CZK billion	17.9	-348.0
Consolidated gross debt in the sector of state institutions	CZK billion	1 740.5	2 153.0
Deficit in the sector of state institutions	% GDP	0.27	-6.20
Debt in the sector of state institutions	% GDP	30.30	38.10
Unemployment rate (mean) <sup>5)</sup>	%	2.0	3.3
Parity (mean) - CZK/€	CZK	25.672	26.444
Parity (mean) - CZK/\$	CZK	22.934	23.196

### Notes:

<sup>1)</sup> Purchasing power parity, data for 2020 were not published.

<sup>2)</sup> Average monthly gross nominal earnings on a full-time equivalent number of employees in the national economy.

<sup>3)</sup> Interest rates on CZK-denominated loans - situations of trades, 12-month average.

<sup>4)</sup> Figure 1. Aa – Goods in the balance sheet of ČNB after introducing guidelines BPM6 in 2014.

<sup>5)</sup> Share of unemployed persons in total labour force by Eurostat and ILO.

Source: Czech Statistical Office, CNB, Eurostat

## Share of agriculture<sup>1)</sup>, forestry<sup>2)</sup>, fishery<sup>3)</sup>, food industry<sup>4)</sup>, wood-processing industry<sup>5)</sup>, paper industry<sup>6)</sup> and furniture production<sup>7)</sup> on the GVA in basic prices (%)

Year	Agriculture	Forestry	Fishery	Food industry	Wood-processing industry	Paper industry	Furniture production
Current prices							
2015	1.792	0.649	0.015	2.131	0.590	0.455	0.311
2016	1.725	0.579	0.016	2.158	0.614	0.466	0.357
2017	1.717	0.557	0.016	2.110	0.615	0.477	0.348
2018	1.746	0.390	0.013	2.078	0.644	0.451	0.326
2019	1.720	0.327	0.013	2.050	0.632	0.470	0.324
2020	1.791	0.301	0.013	2.165	0.628	0.485	0.302
Constant prices of 2015							
2015	1.792	0.649	0.015	2.131	0.590	0.455	0.311
2016	1.849	0.657	0.016	2.231	0.534	0.481	0.342
2017	1.624	0.669	0.016	2.246	0.548	0.492	0.361
2018	1.699	0.593	0.016	2.165	0.505	0.469	0.347
2019	1.633	0.749	0.016	2.189	0.460	0.476	0.350
2020	1.822	0.894	0.018	2.160	0.474	0.551	0.319

### Poznámky:

<sup>1)</sup> CZ-NACE 01 Crop and animal production, hunting and related activities.

<sup>2)</sup> CZ NACE 02 Forestry and logging.

<sup>3)</sup> CZ NACE 03 Fishing and aquaculture.

<sup>4)</sup> CZ NACE 10+11+12 Manufacture of food products, beverages and tobacco products.

<sup>5)</sup> CZ-NACE 16 Wood processing, production of wood, cork, wicker and straw products, except furniture

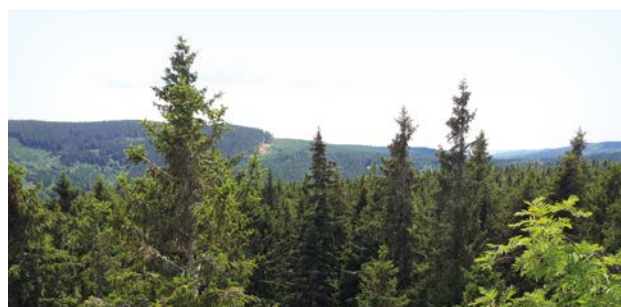
<sup>6)</sup> CZ-NACE 17 Production of paper and paper products

<sup>7)</sup> CZ-NACE 31 Furniture production

Source: Czech Statistical Office, quarterly accounts results; revised data

## 2 FOREST OWNERSHIP STRUCTURE

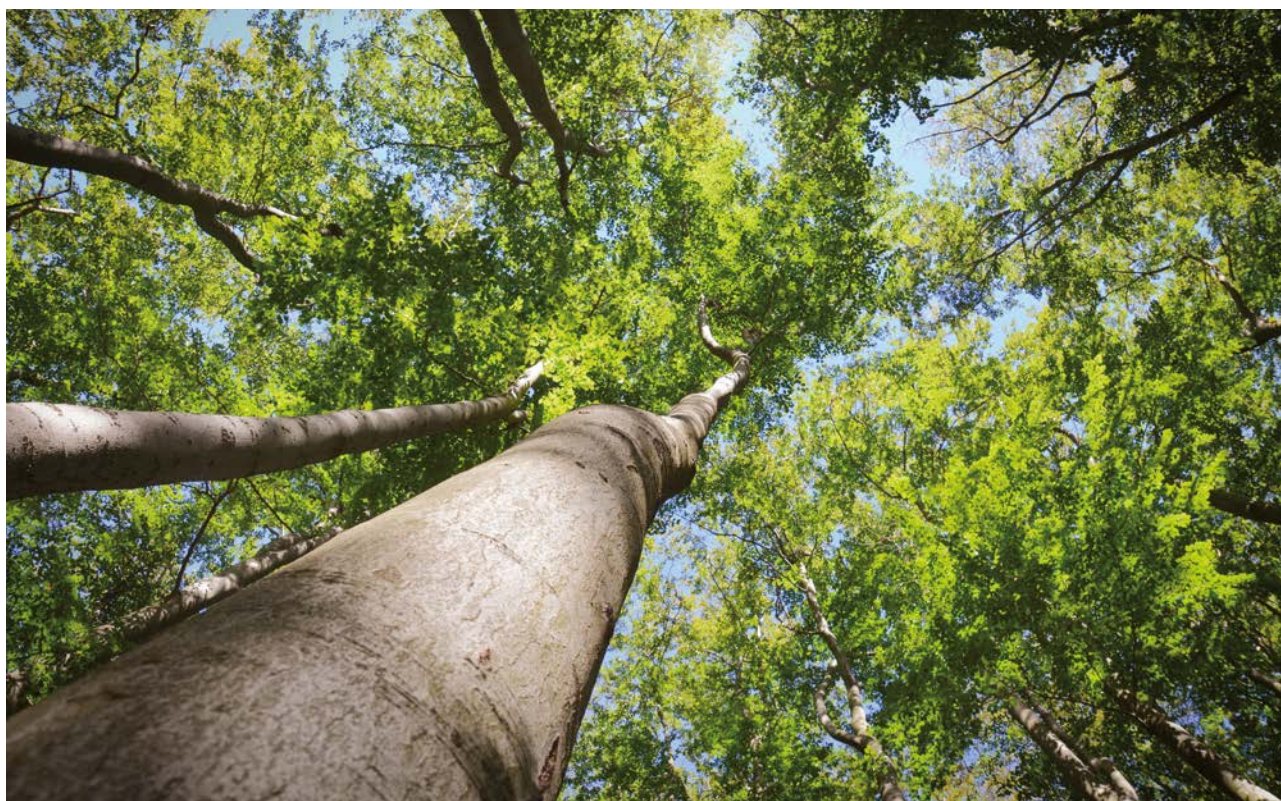
Most forest land is owned by the state and is predominantly managed by LČR. Private entities and municipalities represent other major forest owners. More substantial modifications in the ownership structure are to come in the following years as a result of restitution of forest property to Churches.



### Forest ownership structure

Ownership		Area of forest stands	
		(ha)	%
State forests		1 405 712	53.76
of which	LČR	1 160 057	44.37
	Vojenské lesy a statky ČR, s. p. (military forests)	123 190	4.71
	Ministry of the Environment (National Parks)	95 484	3.65
	Regional forests (secondary schools and other)	2 373	0.09
	Other	23 036	0.88
	Ministry of the Environment (Nature Conservation Agency of the Czech Republic)	1 572	0.06
Legal persons		89 094	3.41
Municipal forests		449 437	17.19
Forests owned by Churches and other religious entities		139 119	5.32
Forest cooperatives and associations		31 035	1.19
Forests owned by individuals		500 041	19.12
Other forests (not listed elsewhere)		175	0.01
Total		2 614 614	100.00

Source: FMI









### 3 FOREST SECTOR OVERVIEW

#### 3.1 Forest Reproductive Material

##### Recognised Sources of Forest Reproductive Material

The central records of recognised sources of forest reproductive material in the Czech Republic are managed by the Forest Management Institute (hereinafter referred to as the "FMI"), an authorised person, which keeps the so-called Register of Recognised Sources of Reproductive Material. For each approved unit, the Institute registers the tree species, category of reproductive material, type of source, registration number, location, altitude or altitudinal zone, area, origin, and in case of tested reproductive material also information whether the organism is genetically modified or not.

The Register of Recognised Sources of Reproductive Material is a web application named ERMA2, with its public section accessible through the web portal of the Ministry of Agriculture [www.eagri.cz](http://www.eagri.cz).

##### Sources of identified reproductive material

74343.51 ha of source type "stand" in total 8560 recognized units and total 610 recognised units of type "seed source" were registered by 31 December 2020.

##### Sources of selected reproductive material

As at 31 December 2020, the registered reduced tree area was 65253.41 ha of source type "stand" in 6171 recognised units. Approved stands of phenotype category "A" covered 6860.38 ha, while the phenotype category "B" represented an area of 58393.03 ha

##### Sources of qualified reproductive material

###### *Parent trees / clones*

As at 31 December 2020, the Register of Recognised Sources of Reproductive Material recorded total 8262 clones, namely 5752 clones of conifers and 2510 clones of broadleaves. The Register comprises clones of total 39 tree species, i.e. 10 conifers and 29 broadleaves.

###### *Seed orchards*

At 31 December 2020, the Register of Recognised Sources of Reproductive Material listed total 134 recognised seed orchards of total 295.78 ha, which are established for 10 conifer and 15 broadleaf tree species.

###### *Clone mixtures*

Total 23 recognised clone mixtures for 5 tree species were registered in the Czech Republic in 2020, covering an overall area of 15.28 ha.

#### 3.2 Forest Nursery Practice

##### Licences

The basic prerequisite for handling with forest reproductive material is a respective licence. As at 31 December 2020, the central register of seed suppliers of the Ministry of Agriculture listed total 684 licence holders, namely 331 individuals and 353 legal persons.

Based on the data submitted to the authorised entity (FMI) by licence holders entitled to marketing the forest reproductive material, there were total 267 suppliers owning at least one production plant operating in the sector of forest nursery practice in 2017.

##### Area of forest nurseries

On the date of 31 December 2020, the total area of forest nurseries marketing forest reproductive material amounted to 1849.98 ha, the actual production area covering 1397.14 ha. In addition to open production areas, the records listed 2.81 ha of glass greenhouses, 24.66 ha of plastic greenhouses and 5.69 ha of hotbeds.



### 3.3 Forest Regeneration and Reforestation

The area of regenerated forest stands is 40 286 ha in 2020 and significant increase in comparison with past years. This is an expected consequence of afforestation of clearings after extensive salvage cutting.

Share of broadleaves of artificial regeneration is stable in the long term. The share slightly rose in comparison with past years. In 2020 the share was 51.3%.

#### Forest regeneration (ha)

Method of regeneration	2000	2010	2015	2018	2019	2020
Artificial	21 867	21 859	18 797	21 245	28 670	33 671
of which Replanting	4 371	3 087	5 246	3 941	3 799	3 621
Natural	3 422	5 127	4 749	4 075	5 224	6 615
Total	25 309	26 986	23 546	25 320	33 894	40 286

Source: Czech Statistical Office

### 3.4 Timber Harvest

The raw timber harvested in the Czech Republic in 2020 totalled 35.75 million m<sup>3</sup>. Compared to 2019, this was 3.17 million m<sup>3</sup> more. Salvage cutting in 2020 substantially contributed to that volume with its share of 95 % and totalled 33.91 million m<sup>3</sup>.

#### Total annual timber harvest

Harvest	Unit	2000	2010	2015	2018	2019	2020
Conifers	mill. m <sup>3</sup>	12.85	15.07	14.38	24.21	31.31	34.49
Broadleaves		1.59	1.67	1.78	1.48	1.27	1.26
Total		14.44	16.74	16.16	25.69	32.58	35.75
Per capita	m <sup>3</sup>	1.41	1.59	1.53	2.42	3.05	3.34
Per 1 ha of forest		5.48	6.30	6.06	9.61	12.18	13.35

Note: Volumes are given in m<sup>3</sup> under bark, minimum top diameter 7 cm.

Source: Czech Statistical Office

### 3.5 Certification of Sustainable Forest Management

#### Overview of certified forests

Ownership	PEFC	FSC*
	Area of certified forests (ha)	
State forests	1 362 379	-
Individuals	86 858	-
Legal entities	164 528	-
Municipal forests	181 936	-
Total	1 795 701	124 566

Note: \*Detailed data by type of ownership are not available for 2020.

Source: FMI





## 4 MAJOR INDICATORS IN TIMBER PRODUCTION

### 4.1 Changes in Forest Land Area

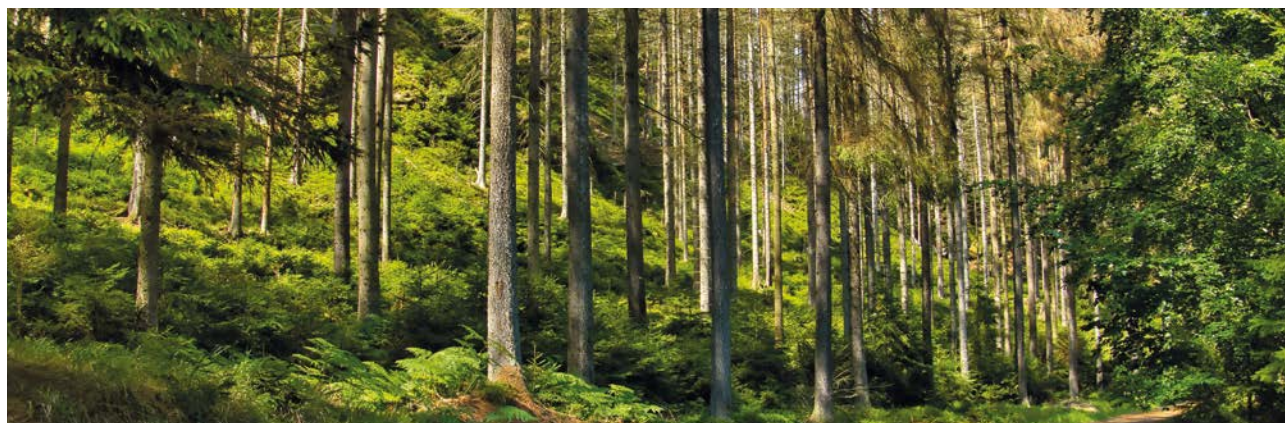
The total area of forest land in the Czech Republic has been constantly increasing. This is partly thanks to afforestation of new land, which exceeds the extent of transformation of forest land for other purposes, and partly thanks to the improvements as to the precision of data from the Land Register. In 2020, the forest land area increased in year-on-year terms by 1 659 ha.



#### Changes in forest land area (ha)

Year	2000	2005	2010	2015	2019	2020
Forest land area	2 637 290	2 647 416	2 657 376	2 668 392	2 675 670	2 677 329

Source: Czech Office for Surveying, Mapping and Cadastre

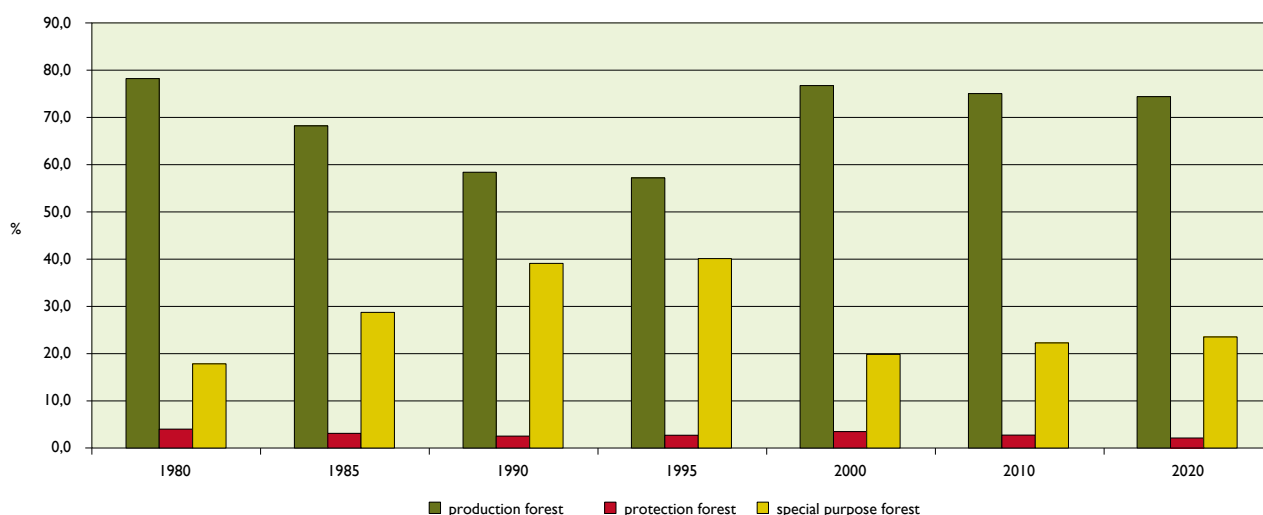


### 4.2 Forest Categories by Their Functions

Individual categories of forests are distinguished by their prevailing functions. A slight but persistent increment in

the category of special purpose forests may be observed. Among other factors, this is caused by increasing demands of the society on non-wood forest functions.

#### Development of forest categories (%)



Source: FMI



### 4.3 Species Composition of Forests

The total area of main coniferous species, particularly spruce, further declined. In contrast, the share of broadleaves, particularly beech, has been augmenting.



#### Species composition in ha and in % of total timber land

Species	Year					
	2000	2010	2015	2018	2019	2020
	Timber land in ha and %					
Norway spruce	1 397 012	1 347 239	1 315 487	1 302 136	1 292 461	1 274 241
	54.1	51.9	50.6	50.0	49.54	48.8
Fir	23 138	25 869	28 699	29 893	30 663	31 429
	0.9	1.0	1.1	1.2	1.2	1.2
Pine	453 159	436 308	428 030	422 243	420 840	419 874
	17.6	16.8	16.5	16.2	16.1	16.1
Larch	97 170	100 761	100 283	99 798	100 264	100 632
	3.8	3.9	3.9	3.8	3.8	3.9
Other conifers	4 586	6 352	7 846	8 375	8 694	10 252
	0.2	0.2	0.3	0.3	0.3	0.4
Total conifers	1 975 065	1 916 529	1 880 344	1 862 445	1 852 922	1 836 427
	76.5	73.9	72.3	71.5	71.0	70.4
Oak	163 761	178 466	185 044	189 842	192 038	195 252
	6.3	6.9	7.1	7.3	7.4	7.5
Beech	154 791	189 998	211 835	223 611	230 305	235 755
	6.0	7.3	8.2	8.6	8.8	9.0
Birch	74 560	72 264	71 796	72 330	72 403	72 744
	2.9	2.8	2.8	2.8	2.8	2.8
Other broadleaves	183 696	209 559	219 207	225 923	228 401	230 856
	7.1	8.1	8.4	8.7	8.8	8.9
Total broadleaves	576 808	650 287	687 882	711 706	723 146	734 606
	22.3	25.1	26.5	27.3	27.7	28.2
Total excl. unstocked areas	2 551 873	2 566 816	2 568 227	2 574 151	2 576 068	2 571 033
	98.8	98.9	98.8	98.8	98.7	98.5

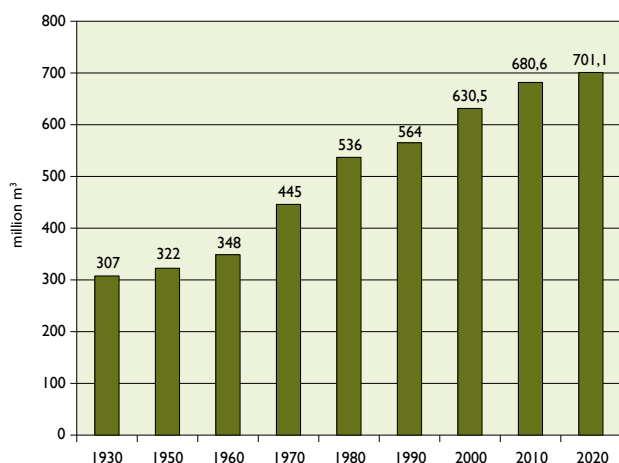
Source: FMI



#### 4.4 Growing Stock and Increments

Compared to 1930, the total growing stock in Czech forests more than doubled. In 2020 the growing stock volume decreased for the first time in many years. Large calamity originated clear-cuts appear. The average growing stock per ha of forest land (growing stock on timber land including clear-cuts) is 268.84 m<sup>3</sup>.

##### Development of growing stock volume



Source: FMI

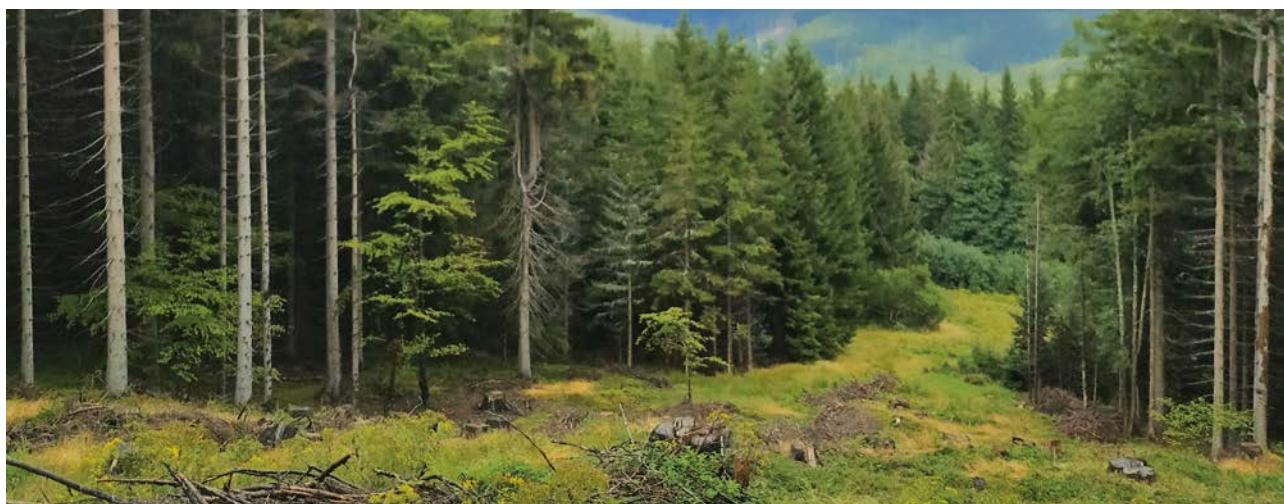
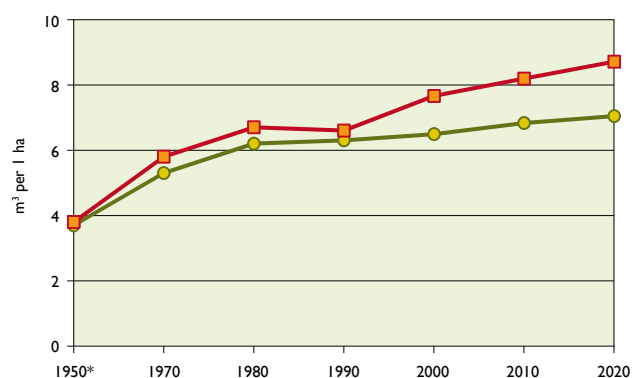


##### Total mean and total current annual increment

Increment	Year						
	1950*	1970	1980	1990	2000	2010	2020
	million m³ u.b. annually						
Total mean	9.0	13.5	16.0	16.3	16.8	17.7	18.2
Total current	9.2	14.8	17.1	17.0	19.8	21.2	22.4
	m³ u. b. per ha of timber land annually						
	1950*	1970	1980	1990	2000	2010	2020
Total mean	3.7	5.3	6.2	6.3	6.5	6.8	7.1
Total current	3.8	5.8	6.7	6.6	7.7	8.2	8.7

**Note:** \* Including forests under 10 ha of size, forest not intended for wood supply and afforested non forest land.

Source: FMI





## 5 FORESTRY SECTOR ECONOMY

### 5.1 State Budget Funds for the Forestry Sector

#### Governmental Financial Obligations Subject to the Forest Act

In 2020, the state allocated total CZK 305.8 million under the obligations determined by the Forest Act. The amount of CZK 9.6 million was granted as part payment to cover the increased costs of planting the minimum number of soil improving and stabilising tree species on the total area of 1 923 ha of regenerated forest stands. CZK 184.2 million was paid to cover the activities of licensed forest managers who manage forests of up to 50 ha in case these did not contract their own licensed forest manager. The allocated amount corresponds the work of licensed forest managers on total 359 435 ha of forests. The state reimburses the costs of forest management guidelines to forest owners who own a total forest area of up to 50 ha and do not have a forest management plan drawn up for their property. The overall amount allocated for such forest owners reached CZK 21.8 million and provided for management guidelines for total 35 885 ha of forest land. The data stated above apply to forest management guidelines valid from 1 January 2021 with the funds allocated in 2020. An amount of CZK 90.2 million was granted to support measures relating to soil improvement and torrent control carried out upon a decision of a state forest administration body in the public interest. Such measures were adopted to control torrents of 1 km in length, and to build or repair water reservoirs of total water retention capacity of 154 thousand m<sup>3</sup>.

#### Government financial obligations subject to the Forest Act (CZK million)

Activities	2017	2018	2019	2020
Soil-improving and stabilising species	7.2	6.2	6.9	9.6
Licensed forest managers	127.1	186.5	157.2	184.2
Forest management guidelines	15.4	17.0	29.7	21.8
Soil improvement and torrent control	36.2	30.2	69.7	90.2
Total	185.9	239.8	263.5	305.8

Source: Ministry of Agriculture

#### State Services Supporting Forest Management

The state provides services free of charge to help forestowners improve the standards of forest management and ensure forest protection against damaging agents. Within its consulting services, the state mainly supplies forest owners with up-to-date information concerning preventive protection of their forests and potential protective measures against damaging agents.

#### State services supporting forest management (CZK million)

Type of service	2017	2018	2019	2020
Aerial liming and fertilisation	44.4	41.8	44.1	22.8
Aerial fire control services	8.1	8.4	5.5	8.0
Large-scale measures in forest protection	0.7	0.9	0.8	0.4
Consultancy	29.2	35.7	38.5	36.4
Other services	0.6	0.0	0.0	0.0
Total	83.0	86.7	88.9	67.6

Source: Ministry of Agriculture

#### Subsidies from State Budget

Support in form of subsidies granted for forest management and selected game management activities is provided from the state budget under the Government Decree No. 30/2014 Coll., on determining binding rules for granting subsidies to forest management and selected game management activities (hereinafter referred to as the "Government Decree"). Such subsidies are granted to forest owners (or persons having the rights and obligations of a forest owner as established by the Forest Act), and to users of hunting grounds, owners of hunting dogs or owners of breeding stations of hunting birds of prey.





**Subsidies for forest management granted from the budget of the Ministry of Agriculture by purpose and ownership category (CZK million)**

Purpose of subsidy	Ownership category	2017	2018	2019	2020
Regeneration of forests affected by air pollution	Municipal	9.5	7.6	4.7	7.2
	State	0.0	0.0	0.0	0.0
	Other	9.8	10.5	12.1	9.8
	Total	19.3	18.1	16.8	17.0
Regeneration, establishment and tending of stands until 40 years of the stands	Municipal	67.8	79.5	148.5	210.9
	State	0.0	0.0	0.2	0.4
	Other	181.8	196.4	396.6	545.2
	Total	249.6	275.9	545.4	756.5
Green and environmentally friendly technologies	Municipal	5.9	6.9	14.9	28.4
	State	0.0	0.0	0.1	0.0
	Other	37.2	49.7	77.5	139.9
	Total	43.1	56.6	92.4	168.4
Subsidies to users of hunting grounds	Municipal	0.02	0.02	0.2	0.7
	State	0.9	0.9	4.3	7.1
	Other	9.0	9.2	31.7	110.6
	Total	9.9	10.2	36.2	118.4
Elaboration of forest management plans	Municipal	10.5	8.9	4.7	10.3
	State	0.0	0.0	0.0	0.0
	Other	18.7	21.0	18.4	14.1
	Total	29.2	29.9	23.2	24.4
Forest protection	Municipal	-	-	2.1	8.3
	State	-	-	0.0	0.0
	Other	-	-	15.4	84.8
	Total	-	-	17.5	93.1
Breeding and training of national hunting dog breeds and hunting birds of prey	Municipal	0.0	0.0	0.0	0.0
	State	0.0	0.0	0.0	0.0
	Other	2.6	2.5	2.6	2.4
	Total	2.6	2.5	2.6	2.4
Total subsidies	Municipal	93.7	102.9	175.1	265.8
	State	0.9	0.9	4.6	7.5
	Other	259.1	289.3	554.3	906.8
	Total	353.7	393.1	734.1	1 180.1

Source: Ministry of Agriculture



## 6 TIMBER MARKET

### 6.1 Domestic Timber Market

The total timber supplies experienced a year-on-year rise by 5368 thousand m<sup>3</sup> amounting to 35754 thousand m<sup>3</sup>, while softwood supplies represented 34487 thousand m<sup>3</sup> and hardwood supplies totalled 1267 thousand m<sup>3</sup>.

#### Timber supplies (1 000 m<sup>3</sup>)

Supplied assortments (excl. imports)	2018	2019	2020
Roundwood <sup>x)</sup>	14 428	18 915	20 678
of which			
Softwood	13 993	18 514	20 286
Hardwood	435	401	392
Pulpwood <sup>xx)</sup>	6 415	6 449	8 359
of which			
Softwood	6 020	6 103	8 036
Hardwood	395	346	323
Fuelwood	3 846	5 022	6 717
of which			
Softwood	3 200	4 496	6 165
Hardwood	646	526	552
Total timber supplies	24 689	30 386	35 754
of which			
Softwood	23 213	29 113	34 487
Hardwood	1 476	1 273	1 267

**Note:** <sup>x)</sup> Including pole and mine timber.

<sup>xx)</sup> Including groundwood.

The volumes of logging residues and chips approximately 2.2 million m<sup>3</sup> in 2018, 2.5 million m<sup>3</sup> in 2019 and 2.7 million m<sup>3</sup> in 2020 are not included in the total supplies of roundwood.

**Source:** Czech Statistical Office, Ministry of Agriculture

#### Timber exports and imports (1 000 m<sup>3</sup>)

Assortment	Export	Import
Softwood roundwood and pulp	15 513	818
of which		
Spruce	15 070	739
Pine	326	72
Other	117	7
Hardwood roundwood and pulp	244	137
of which		
Oak	18	45
Beech	121	70
Poplar	1	0
Birch	41	2
Other	63	20
Charcoal	1	23
Fuelwood	62	13
Chips, particles	558	476
Sawdust, Wood Waste, Residues	883	591
Wood pellets and other agglomerates	811	159
Total	18 072	2 217

**Source:** Ministry of Agriculture

### 6.2 Timber Export and Import

#### Timber exports and imports

	Exports	Imports	Balance	Exports	Imports	Balance	Exports	Imports
	CZK million <sup>1)</sup>			1 000 m <sup>3</sup> <sup>2)</sup>			Average price CZK/m <sup>3</sup>	
Total	21 156	2 619	18 537	18 072	2 217	15 855	1 171	1 181
of which								
EU-28	17 976	2 358	15 618	16 128	2 131	13 997	1 115	1 107
Germany	3 701	454	3 247	3 627	733	2 894	1 020	619
Austria	8 100	56	8 044	6 329	197	6 132	1 280	284
Slovakia	1 982	1 038	944	1 900	800	1 100	1 043	1 298
Poland	2 147	557	1 590	2 760	365	2 395	779	1 526

**Source:** <sup>1)</sup> Czech Statistical office, <sup>2)</sup> Ministry of Agriculture



## 7 OTHER FOREST-BASED ACTIVITIES AND SECTORS

### 7.1 Game Management

In 2020, the country registered 5 786 hunting grounds under game management with their total area of 6 884 619 ha. These comprised 200 game preserves of total 49 041 ha and 286 pheasantries of total 91 069 ha.



#### Hunting of main game species (pcs)

Game species	2016	2017	2018	2019	2020
Red Deer	26 162	27 888	28 307	29 034	29 863
Fallow Deer	20 498	23 142	23 896	29 051	31 057
Mouflon	9 727	9 630	9 713	10 417	10 791
Roe Deer	100 852	103 492	102 265	103 072	105 665
Wild Boar	160 484	230 035	138 174	240 511	161 699
Duck	249 779	238 529	238 346	243 062	206 979
Pheasant	472 983	452 550	459 867	462 067	331 667
Hare	32 988	26 830	29 168	43 914	32 360

Source: Ministry of Agriculture, Ministry of the Environment, Czech Statistical Office

#### Spring stocks of main game species (pcs)

Game species	2016	2017	2018	2019	2020
Red Deer	29 495	29 789	30 289	29 773	31 039
Fallow Deer	32 880	33 734	34 950	37 799	39 058
Mouflon	21 143	21 707	21 663	20 949	22 138
Roe Deer	294 952	298 852	293 283	291 070	292 311
Wild Boar	62 134	58 746	54 456	60 863	59 086

Source: Ministry of Agriculture, Ministry of the Environment, Czech Statistical Office

### 7.2 Timber Processing Industry

The total log breakdown in the Czech Republic reached the volume of 9.700 million m<sup>3</sup> of softwood and hardwood roundwood, which was used to produce 5.213 million m<sup>3</sup> of softwood sawn wood and 0.145 million m<sup>3</sup> of hardwood sawn wood.

In comparison with last year softwood and hardwood sawn wood was produced more by 542 thousand m<sup>3</sup>. Export of softwood and hardwood sawn wood decreased by

532 thousand m<sup>3</sup> and the import decreased by 119 thousand m<sup>3</sup> in comparison with last year. The domestic consumption of sawn wood partially increased by 955 thousand m<sup>3</sup>.

#### Log breakdown and sawn wood production (1 000 m<sup>3</sup>)

	2018	2019	2020
Log breakdown	8 150	8 700	9 700
Sawn wood production	4 550	4 816	5 358

Source: Ministry of Agriculture



**Market with timber products (1 000 m<sup>3</sup>)**

Product	Year	Production	Import	Export	Consumption
Softwood roundwood <sup>x)</sup>	2018	13 993	990	5 983	9 000
	2019	18 714	966	11 474	8 206
	2020	20 286	555	11 741	9 100
Hardwood roundwood <sup>x)</sup>	2018	435	176	209	402
	2019	401	145	232	314
	2020	392	120	180	332
Softwood sawn wood	2018	4 350	700	3 750	1 300
	2019	4 675	563	3 850	1 388
	2020	5 213	483	3 352	2 344
Hardwood sawn wood	2018	200	277	120	357
	2019	141	327	79	389
	2020	145	288	45	388
Particle boards	2018	1 230	840	1 608	462
	2019	1 286	864	1 411	739
	2020	1 711	471	1 566	616
Plywood	2018	234	98	178	154
	2019	254	84	187	151
	2020	263	129	186	206
Fibreboards	2018	34	246	103	177
	2019	42	377	284	135
	2020	44	493	247	290
Softwood pulpwood <sup>xx)</sup>	2018	6 620	256	2 117	4 759
	2019	7 203	221	2 400	5 024
	2020	8 036	263	3 772	4 527
Hardwood pulpwood	2018	395	6	5	396
	2019	346	21	40	327
	2020	323	17	64	276

**Note:** <sup>x)</sup> Including pole and mine timber. <sup>xx)</sup> Including groundwood.

**Source:** Ministry of Agriculture

**7.3 Pulp and Paper Industry**

The consumption of softwood timber for pulp production reached 4 491 thousand m<sup>3</sup>, i.e. 2 957 thousand m<sup>3</sup> of softwood pulp and 1 534 thousand m<sup>3</sup> of softwood chips and particles.

The pulp and paper industry produced total 594 thousand tons of pulp in 2020, chemical pulp representing 591 thousand tons.

**Consumption of wood for pulp production (1 000 m<sup>3</sup>)**

Timber assortment	Consumption		
	2018	2019	2020
Chips and particles	1 336	1 455	1 534
Pulpwood	2 228	2 662	2 957
Total	3 564	4 117	4 491

**Source:** Association of the Czech Pulp and Paper Industry

**Pulp, paper, paperboard, and cardboard production (1 000 t)**

Product	2018	2019	2020
Mechanical fibre	0	0	0
Chemical pulp	414	553	591
Other fibre	6	4	3
Total	420	557	594
Paper, paperboard and cardboard	843	882	893

**Source:** Association of Czech Pulp and Paper Industry



## 8 ABBREVIATIONS

CNB	Czech National Bank	GDP	Gross Domestic Product
CZK	Czech koruna (currency)	GVA	Gross Value Added
ESA	European System of Accounts	LČR	Forests of the Czech Republic, State Enterprise
EU	European Union	ILO	International Labour Organization
FMI	Forest Management Institute	PEFC CR	Programme for the Endorsement of Forest Certification Schemes – Czech Republic
FSC CR	Forest Stewardship Council - Czech Republic		

## 9 CONTACTS TO SELECTED FORESTRY ORGANISATIONS IN THE CZECH REPUBLIC

### Ministry of Agriculture

Těšnov 65/17  
110 00 Praha 1  
info@mze.cz  
www.eagri.cz

### Ministry of the Environment

Vršovická 1442/65,  
100 10 Praha 10  
info@mzp.cz  
www.mzp.cz

### Czech University of Life Sciences Prague Faculty of Forestry and Wood Sciences

Kamýcká 1176,  
165 21 Praha 6 – Suchbát  
<http://www.fld.czu.cz/>

### Mendel University in Brno Faculty of Forestry and Wood Technology

Zemědělská 3,  
613 00 Brno  
[www.lfd.mendelu.cz/](http://www.lfd.mendelu.cz/)

### Forest Management Institute Nábřeží 1326

250 01 Brandýs nad Labem  
podatelna@uhul.cz  
www.uhul.cz

### Forestry and Game Management Research Institute

156 04 Praha 5 – Zbraslav  
admin@vulhm.cz  
www.vulhm.cz

### The Association of Municipal and Private Forest Owners in the Czech Republic

K Silu 1980  
393 01 Pelhřimov  
info@svol.cz  
www.svol.cz

### Lesy České republiky, s.p. (Forests of the Czech Republic, State Enterprise)

Přemyslova 1106/19  
500 08 Hradec Králové  
lesycr@lesycr.cz  
www.lesycr.cz

### Vojenské lesy a statky ČR, s. p. (Military Forests and Farms, State Enterprise)

Pod Juliskou 1621/5  
160 00 Praha 6  
info@vls.cz  
www.vls.cz

**ISBN: 978-80-7434-648-4**

### Photo from [www.shutterstock.com](http://www.shutterstock.com):

Chodimeafotime (5, 7, 10), Artush (6), Jiri.sulcek (8), michalSen (9), Pyty (2, 12), Kristyna Henkeova (15), Krasula (16)

**Others:** Dana Koderova (5, 10, 11), Forestry and Game Management Research Institute (8)




## This image shows a full page of white paper with horizontal dotted lines. The lines are evenly spaced and run across the width of the page, providing a guide for handwriting or typing. There are no margins, text, or other markings on the page.



**Note**



An aerial photograph of a vast, dense forest of evergreen trees, likely spruce or fir, covering a hillside. The trees are a mix of dark green and yellowish-green, suggesting some autumnal change or varying tree health. A white, stylized geometric line, resembling a large 'V' or a bracket, is superimposed over the forest. The background shows rolling hills under a soft, hazy sky, indicating a sunrise or sunset scene.

Published by  
Ministerstvo zemědělství  
Těšnov 17, 110 00 Praha 1  
[www.eagri.cz](http://www.eagri.cz)

Praha 2021

ISBN: 978-80-7434-648-4