



Individual Travel Bursary Fellowship Awards | International Event Sponsorship

The issues opposite are just some covered by the CRP and relevant to the programmes of work of the OECD's Committee for Agriculture and Fisheries Committee over the next two years.

If you are working on any of the CRP action areas below, we would welcome an application from you:

- [Shaping behaviours for transformational action](#)
- [Strengthening resilience in the face of future uncertainty and risks](#)
- [Innovating for sustainable production and productivity](#)

All the information about the fellowship awards and international event (workshop, conference, symposium) sponsorship, together with the applications forms are on the Applications page of the CRP website:

oe.cd/agriculture-crp

Or contact the CRP Secretariat directly:
TAD.PROG@oecd.org.

Participating Countries

Australia	France	Netherlands
Austria	Germany	New Zealand
Belgium	Hungary	Norway
Canada	Ireland	Slovak Republic
Chile	Israel	Spain
Colombia	Italy	Sweden
Costa Rica	Japan	Switzerland
Czechia	Korea	Türkiye*
Denmark	Latvia	United Kingdom
Estonia	Lithuania	United States
Finland		

Accession countries: Brazil and Ukraine
Türkiye is a member until 24.12.26.



Call for Applications for Funding

[Are you working on \(for example\)...](#)

- Sustainable and resilient productivity growth and food security and nutrition;
- Climate risks, reducing emissions, carbon sequestration;
- Halting and reversing forest loss and land degradation;
- Livestock issues: reducing environmental impacts, animal health and welfare;
- Biodiversity, enhancing ecosystem services;
- Improving soil health and water and air quality, agro-ecological and other innovative, context specific approaches.
- Innovations in the transfer and development of agricultural knowledge, Indigenous and traditional knowledge;
- Fisheries and aquaculture productivity, sustainability and resilience;

[Would you like to...](#)

- Visit a lab in another country to establish new collaborative links?
 - Expand your research through a short stay in a foreign country?
 - Start an international research network?
- Or
- Are you organising an international conference or workshop?

[Need some financial help?](#)

How about applying for an OECD Co-operative Research Programme (CRP) fellowship award or international event sponsorship?

**Next call: April 2026 to
10 September 2026 (Midnight, CET)**



OECD brings together the governments of countries committed to democracy and the market economy from around the world. It provides a setting where governments compare policy experiences, seek answers to common problems, identify good practice and coordinate domestic and international policies.

For more information see: www.oecd.org

[The Co-operative Research Programme](#) comprises:

- **The Governing Body**, composed of a representative from each country participating in the Programme. It agrees the programme of work, the budget, the orientation of the Programme and the selection of applications for funding.
- **The Scientific Advisory Body**, composed of 6 eminent scientists with agricultural research administration experience, nominated by the Governing Body. It ensures the scientific quality of the applications for funding and recommends the fellowships and conferences to be funded to the Governing Body.
- **The Secretariat** is responsible for the day-to-day operation of the Programme and provides a central contact point.
- **The National Correspondents** (one for each country participating in the Programme) are responsible for promoting the Programme to interested scientists and institutions in their country and distributing information.



[Sustainable Agricultural and Food
Systems](#)

Fellowship Awards and International Event Sponsorship Programme

Trade and Agriculture Directorate
Organisation for Economic
Co-operation and Development
2, rue André Pascal
75775 Paris Cedex 16
France

TAD.Prog@oecd.org

oe.cd/agriculture-crp

Individual Travel Bursary Fellowship Awards | International Event Sponsorship

More information:

➤ **Research Fellowships:** sponsorship of scientists to conduct research projects in a different participating country with a view to strengthening the international exchange of ideas and increasing international mobility and co-operation.

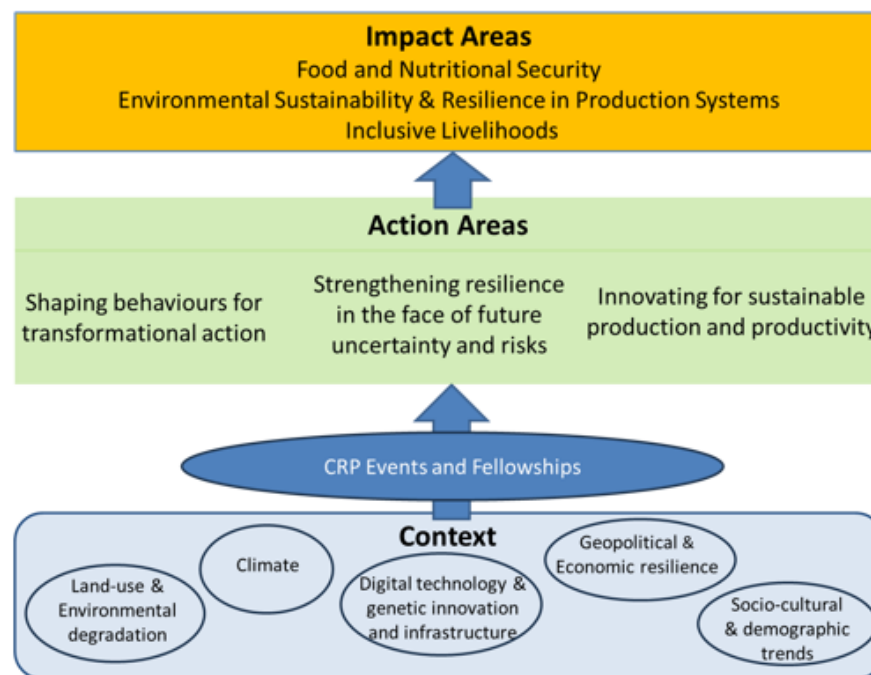
The Programme pays transportation and subsistence costs to research scientists who should have 4 years of postdoctoral training, have a long-term renewable position, and are from participating countries to conduct research in a laboratory in another participating country. Fellowships may be from 6 to 26 weeks.

➤ **Events:** sponsorship or co-sponsorship of international events (workshop, conference, symposium) organised by, e.g. research institutions, international associations, with a view to informing policy makers, industry and the academic world of current and future research, scientific developments and opportunities on issues relevant to the CRP and the OECD's policy priorities.

The sponsorship is in the form of a direct subsidy to event organisers towards the funding of travel costs of proposed speakers and a contribution towards the publication costs of the proceedings of the organised event.

OBJECTIVES AND ACTION AREAS

The Co-operative Research Programme strives for impact in the areas of food security and nutrition, environmental sustainability and resilience and inclusive livelihoods by organising its work along three action areas. These action areas build on the CRP's traditional strengths in advancing the frontiers of knowledge on sustainable agriculture to inform policy formulation in a rapidly changing global context and enhancing international co-operation. The action areas also target improved understanding of incentives for transformational change and a recognition of the interconnectedness of issues related to policies for agriculture, food, fisheries and forest systems.



SCIENTIFIC ADVISORY BODY MEMBERS

Dr. Lieve HERMAN
ILVO - Flanders Research Institute for Agriculture, Fisheries and Food
 Belgium
 E-mail: lieve.herman@ilvo.vlaanderen.be

Dr. Michael J. ROTHROCK
USDA-ARS
US National Poultry Research Center
 United States
 E-mail: michael.rothroek@usda.gov

Prof. Paloma MELGAREJO NÁRDIZ
Institute for Agricultural and Food Research and Technology (INIA-CSIC)
 Spain
 E-mail: melgar@inia.csic.es

Dr. Andy SHEPPARD
CSIRO Health & Biosecurity
 Australia
 Email: andy.sheppard@csiro.au

Dr. Se-Yeoun CHA
Jeonbuk National University, College of Veterinary Medicine and Center for Poultry Diseases
 Republic of Korea
 E-mail: seyeouncha@jbnu.ac.kr

Dr. Maria Joao SANTOS
Department of Geography, University of Zürich
 Switzerland
 E-mail: maria.j.santos@geo.uzh.ch