



CAP measures for soil protection in Poland

Magdalena Nowicka

**Ministry of Agriculture and Rural Development
Poland**



Cross-compliance

Standards for Good Agricultural and Environmental Condition of land – GAEC

- Protective soil cover (plant cover, stubble, crop residues, mulch) is to be in place at least from 1 November to 15 February on an area equivalent to at least 30% of arable land that is located in areas susceptible to water erosion and forms part of an agricultural holding.



Cross-compliance

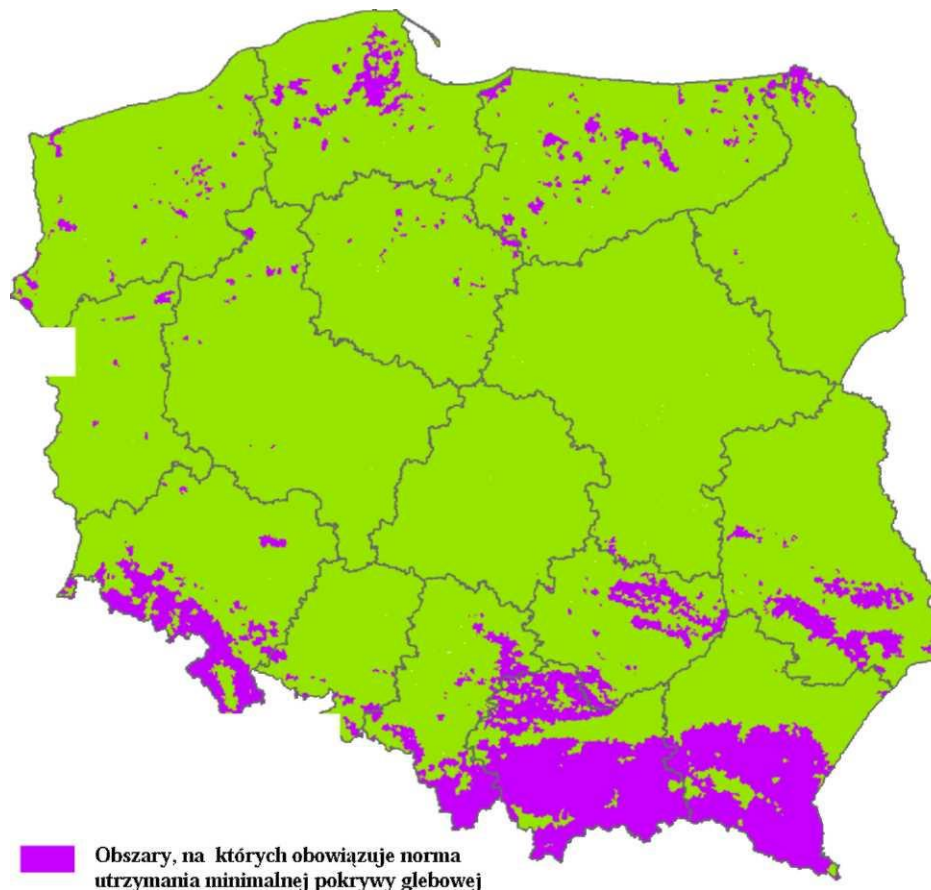
- Arable land located on slopes with an incline of more than 20°:
 - may not be used to grow crops requiring furrows along the slope
 - may not be left as bare fallow
- There must be plant or litter cover between rows on arable land located on slopes with an incline of more than 20° on which perennial crops are grown.



Cross-compliance

- Ban on burning of agricultural land
- Prohibition to discharge onto the soil the particularly harmful substances

Erosion vulnerable zones





Cross-compliance

Statutory Management Requirements (SMR)

inter alia requirements for:

- use of fertilizers
- use of plant protection products



CAP 1st Pillar - Greening

- crop diversification,
- maintenance of existing permanent grassland,
- ecological focus area (EFA).



CAP 1st Pillar - Greening

Crop diversification

- exempted holdings with less than 10 ha of arable land,
- holdings between 10 and 30 ha of arable land: at least 2 crops,
- holdings with more than 30 ha of arable land: at least 3 crops.



CAP 1st Pillar - Greening

Maintenance of existing permanent grassland

- Natura 2000 – ban on converting or ploughing of environmentally sensitive areas
- maintaining the ratio of permanent grassland in the agricultural land at the national level.



CAP 1st Pillar - Greening

- exempted holdings with less than 15 ha of arable land,
- share of the EFA areas in the holding at the level of 5% of arable land,
- list of EFA areas: land laying fallow, landscape features, buffer strips, strips analog forest edges, short rotation coppice, afforested areas, catch crops or green cover, nitrogen-fixing crops.



CAP 2nd Pillar – Agri-environment-climat

Type of operation – **Soil and water protection**

Applicable in: nitrate vulnerable zones + erosion vulnerable zones + low humus soils zones = 19,2 % of agricultural land.

Scheme I - Catch crops – arable land cover (above GAEC obligations), mix of at least different 3 pernnial plant species.

Payment 650 zł/ year (approx. 145 eur/ha, year)



CAP 2nd Pillar – Agri-environment-climat

Type of operation – **Soil and water protection**

Scheme II – **Protective strips** – arable land on slopes (20 % or more), min 6 m. large protective strip across the slope, permanently covered by grass.

Payment - 450 zł/ha, year (approx. 100 eur/year)



CAP- 2nd Pillar – Agri-environment-climat

Type of operation - Sustainable agriculture (1)

- Crop rotation :
 - Every year at least 4 different plant species should be cultivated . Every crop covers more than 10% and less than 65% of arable land of the holding.
 - Crops from 3 different groups / species are cultivated in 5 years. (17 groups: eg. cereals, root crops, oilseeds, flax).



CAP- 2nd Pillar – Agri-environment-climat

Type of operation - **Sustainable agriculture (2)**

- In the period of 5 years, one time catch crop is cultivated on every plot.
- In the period of 5 years, one time carbon saving practice is implemented on every plot (manure application, straw or catch crop plowing).

Soil analysis (including organic carbon)

Payment 400 zł/ha, year (approx. 89 eur/ ha,year)